

62. Nisi Dominus

(Psalm 127 - Ludwig Senfl)

Anonymous

5

10

15

20

25

30

35

1) a on 4th course, here, but editor dislikes "lazy" cadences. Same in bar 62.

40

45

50

55

60

65

70

75 80

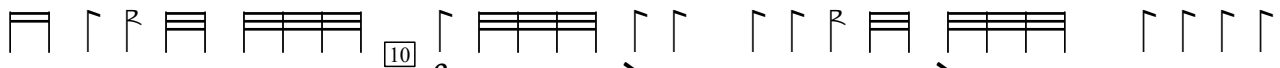
Part 2 - Cum dederit



	a b δ b a	δ δ b δ b δ a	δ a r e	a r δ
r a r a r e	a r	a a a	a r e	r a b a a



5	r a a	a e r e	a a a b δ a r δ a	r r δ a	δ r a	f δ δ	f h f
r a	e r e	r	r	a	a a r	a	a r e



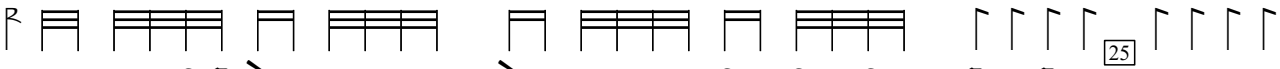
	a r	a r e	10	f δ r	r a r a r δ r a	a
a b δ	a r [δ]	a r e	r δ r a δ a	a	a r a	b a b δ
a	e r	a	a	a	r e r	a r e



	a r a	δ b δ a	15	r a r a r δ r	a r δ a a r
b δ	r a	e a	b a	a e r e	a r
r	r a	e r e	r	r	r r



	δ a a	r r	20	δ a a	r a r a r δ r a r a
b δ	δ δ	δ a a	δ δ	δ δ	a a r a
r	a a	a a e r	r r r	r a a	f



	δ r a r δ	a r δ	25	r r	r r
e r	r a r a r e	r a r a	δ δ a δ a r	δ a δ	δ δ
r	r a r a r e	r a r a	δ r a	a a a a	f f f f



	δ δ b δ b δ b a	δ δ δ b δ b δ a	b δ	a b δ a r δ a	δ a b a b δ b a
f a	f a	f a	f b	f a	f a
δ δ	δ	δ	δ	δ	δ r a



30	a a e r e	a a	δ f	δ a r a	a	35	a r δ
b b	r r e	r r	b a	r r a	r	a b	δ b b
a	a	a δ a r a	r a	r a	e r a r e	a r	a r r

2)

1) e in orig.
2) d in orig.

Musical notation for the first system, including a treble clef, a key signature of one flat, and a 3/4 time signature. The notation consists of a single staff with rhythmic flags and notes.

40

Musical notation for the second system, starting at measure 40. It features a treble clef, a key signature of one flat, and a 3/4 time signature. The notation includes a treble clef, a key signature of one flat, and a 3/4 time signature. The notation consists of a single staff with rhythmic flags and notes.

45

1)

Musical notation for the third system, starting at measure 45. It features a treble clef, a key signature of one flat, and a 3/4 time signature. The notation includes a treble clef, a key signature of one flat, and a 3/4 time signature. The notation consists of a single staff with rhythmic flags and notes.

Musical notation for the fourth system, starting at measure 55. It features a treble clef, a key signature of one flat, and a 3/4 time signature. The notation includes a treble clef, a key signature of one flat, and a 3/4 time signature. The notation consists of a single staff with rhythmic flags and notes.

Musical notation for the fifth system, starting at measure 60. It features a treble clef, a key signature of one flat, and a 3/4 time signature. The notation includes a treble clef, a key signature of one flat, and a 3/4 time signature. The notation consists of a single staff with rhythmic flags and notes.

2)

65

Musical notation for the sixth system, starting at measure 65. It features a treble clef, a key signature of one flat, and a 3/4 time signature. The notation includes a treble clef, a key signature of one flat, and a 3/4 time signature. The notation consists of a single staff with rhythmic flags and notes.

70

Musical notation for the seventh system, starting at measure 70. It features a treble clef, a key signature of one flat, and a 3/4 time signature. The notation includes a treble clef, a key signature of one flat, and a 3/4 time signature. The notation consists of a single staff with rhythmic flags and notes.

75

Musical notation for the eighth system, starting at measure 75. It features a treble clef, a key signature of one flat, and a 3/4 time signature. The notation includes a treble clef, a key signature of one flat, and a 3/4 time signature. The notation consists of a single staff with rhythmic flags and notes.

1) a on 4th course in orig. Editor dislikes "lazy" cadences. Same in bars 56, 74.

2) b on 3rd course deleted, here.